

# Motordrive MFL & MDR3

## Motor drive for overhead line switch



### Benefits

- Compliant – According to IEC 62505-2 and IEC 62271-1
- Weather-proof – Protection degree IP 54 according to EN60529:1991
- Failure safe – Motor protected against overheating
- Durable – Corrosion Category C4 according to DIN EN ISO 12944-2
- Robust – highest rating against mechanical impact (IK 10 up to 20 Joules) according to IEC 62262:2002 / IEC 62271:2007
- Application-oriented – Cable inlets (M25x1.5)
- Easy and fast installation – Enclosure with four screws
- Always ready – Emergency crank handle in case of power outage

Electrical data	MFL	MDR3	Unit
Operational voltage	230 AC 110 DC	230 AC 110 DC	V
Control voltage	230 AC 110 DC	230 AC 110 DC	V
Frequency range	16.7 - 60	50	Hz
Electricity demand during a half cycle (on or off)	3	3	A
Power input	300	300	W
Nominal current input during switching operation	3-7	3-7	A
Max. initial current	11	11	A
Safety limit switch for hand operation	√	√	
Voltage auxiliary contact	48 DC	48 DC	V
Potential-free contacts (NO/NC)	1x each	6x each	
Impulse signal	√	√	

Mechanical data	MFL	MDR3	Unit
Dimensions	See drawing	See drawing	
Outside lever rotation angle (from open to close)	90	90	°
Stroke	120/190	125/148/190	mm
Torque output		400	Nm
Mechanical life	>10'000	>10'000	Cycles
Operating time (depending on mechanical load and voltage tolerance)	3-7	3-7	s
Weight	35	33	kg

Construction characteristics	MFL	MDR3	Unit
Protection degree	IP 54	IP 54	
Protection degree against mechanical damage	IK 10	IK 10	
Emergency crank handle	√	√	
No sharp edges	√	√	
No damage in case of defect limit switches	√	√	
Ambient temperature	-30 ... +50	-30 ... +50	°C
Connection area to clamps	≥ 20	≥ 20	mm
Maintenance	free	free	

Technical modifications reserved

# Options

## Operational voltages:

- 230 V DC
- Customized versions

On request

## Control voltages:

- 24 V DC
- 48 V DC
- 60 V DC
- 220 V DC
- 230 V AC

On request

## Local electrical operation

- Main switch
- Customized control panel

On request

## Heating

- With thermostat
- With thermo-hygrostat
- Continuous heating (remote control ON/OFF)

On request

## Mechanical counter of switching cycles

On request

## Door switch (signal transmitter)

On request

## Customized stroke: 120 bis 200mm

On request

## Permanent signal

On request

Technical modifications reserved

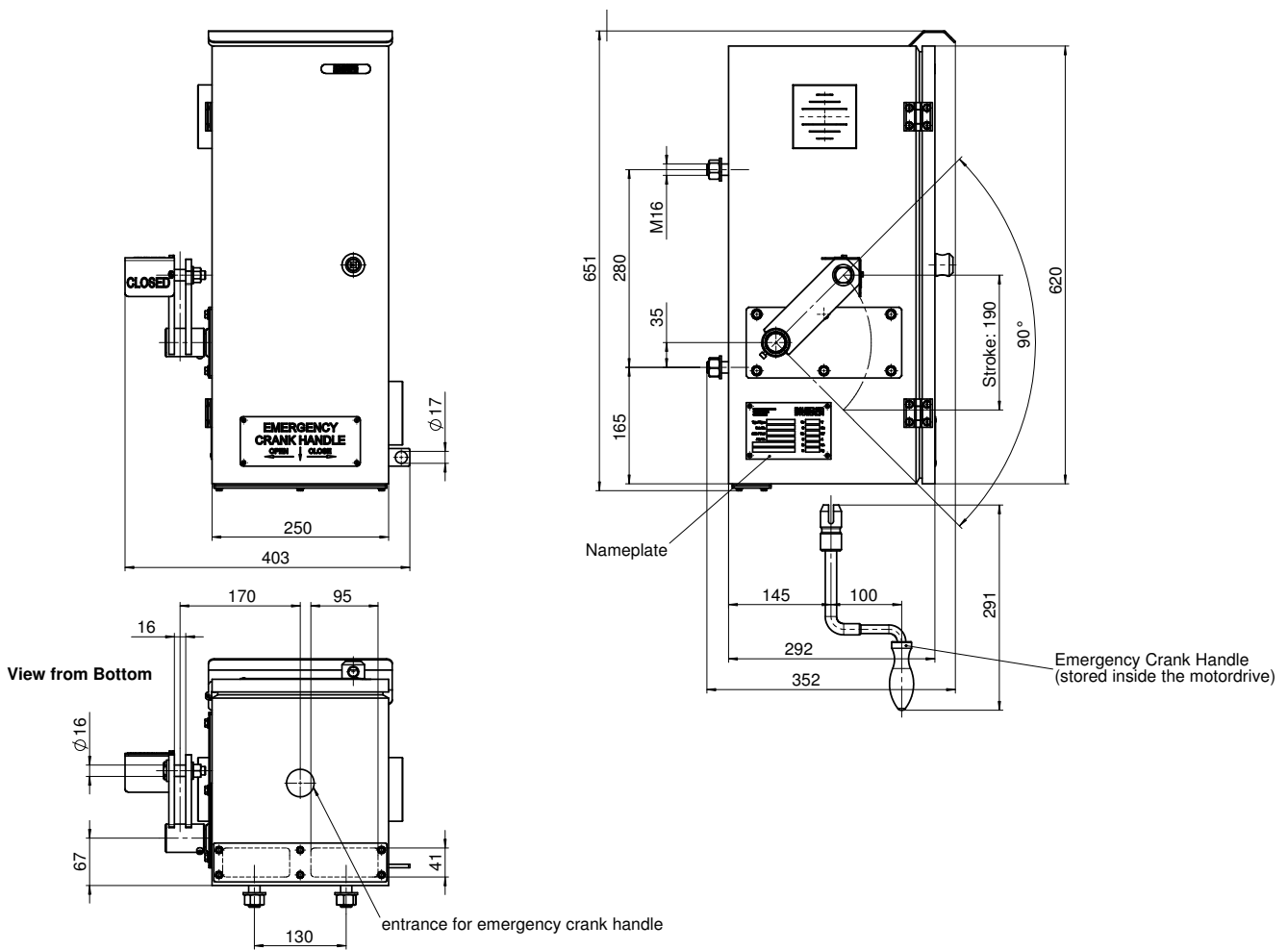


Counter



Heating

# Motordrive MFL



# Motordrive MDR3

